



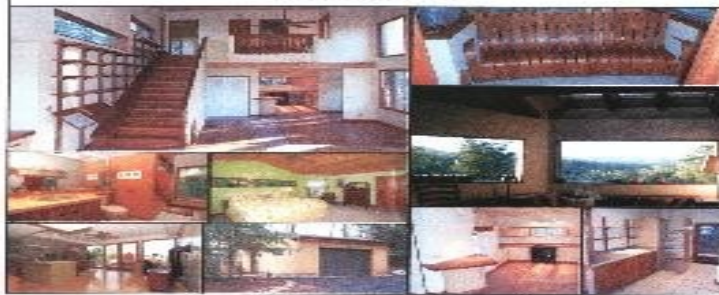
BUY HOME FROM OWNER



FOR SALE - BLUE RIDGE MOUNTAIN MASTERPIECE!
 This magnificent home was built by master-craftsman Doug Sigler. Cherry, ash and oak woods throughout. Cabinets custom designed with pull-out pantries, built-in desk, buffet, kitchen eating area, hand-curved bench (featured in the latest Lark Book "The Master Woodworkers of Penland"), entertainment center, bookcase and lighted staircase - all cherry wood. Hand-crafted tiles and sinks by Penland artists Suzy Lindsey & Kent McLaughlin. 2 fireplaces, 3 ceiling fans, central heat/AC, W/D, side-by-side refrigerator with water/ice in door, microwave, dishwasher and Direct TV, all included.
 Two bedrooms, 2 1/2 baths plus large studio space with floor-to-ceiling windows. Lower level beautifully appointed quarters with wood in closet. Unobstructed views of Roan Mountain from all windows and both large decks. 1 1/2 car garage with large storage area and electric door opener. Built in 2001 with 2256 sq. ft. of living space on 2-acre lot. Only 7 minutes drive from Penland School of Crafts.



New!



\$349,000



Address

76 Doug's Drive, Penland, North Carolina, 28765

ABOUT HOME

FOR SALE - BLUE RIDGE MOUNTAIN TOP MASTERPIECE

This very special home exemplifies the "Not So Big House" school of thought featuring quality over quantity. It was built by master-craftsman Doug Sigler who used cherry, ash and oak woods throughout. Special features include custom-designed cabinets with pull-out pantries, built-in desk, buffet, kitchen eating area, hand-curved bench (featured in the latest Lark Book "The Master Woodworkers of Penland"), entertainment center, bookcase and lighted staircase - all cherry wood. Hand-crafted tiles and sinks by Penland artists Suzy Lindsey and Kent Mc Laughlin. Two fireplaces, 3 ceiling fans, central heat/AC, W/D, side-by-side refrigerator with water/ice in door, microwave, Jenn-air stove, dishwasher and Direct TV included. The master bedroom and bath, plus a guest bedroom are on the upper level. Kitchen, laundry room, living/dining room and 1/2 bath are on the main level, which also has a 2-sided, see-through wood fireplace. A large, covered deck area is off the entry way and is a perfect place to entertain or watch the sun set over the mountains. The lower level has a large studio/office space with floor-to-ceiling windows leading to the large deck area. There is also a family room/guest sleeping quarters, gas log fireplace, full bath and enormous walk-in closet on the lower level. The house offers unobstructed views of Roan Mountain and 3 mountain ridges from all 59 windows. A detached 1 1/2 car car garage with large storage space and electric door opener is only steps from the house. Built in 2001 with 2256 sq ft of living space on a 2 acre lot, the property is maintenance free with over 100 trees and mountain laurel bushes. There is space to build a separate studio or guest house. This beautiful home is only a one-hour drive from Asheville; 2-hour drive from Charlotte and only minutes from the world-famous Penland School of Craft, the Appalachian Trail and the Blue Ridge Parkway. This is "the perfect" summer home in the mountains or a wonderful year-round residence.

PROPERTY DETAILS

Sq. Footage: 2256
 # of Floors: 3
 # of Bedrooms: 3
 # of Bathrooms: 2
 Year Built: 2001

If you like this house, call its owner by telephone (952)223-4580 or leave him message.

contact@leadfsbo.com

LeadFSBO Company

Find your Dream Home



With him you may on all agree.
Without go-betweens. Without comission.

NEW!

Contact Information

Contact: ReAnn Scott
Phone: (952)223-4580
Phone: (952)223-4580

Email:
contact@leadfsbo.com

LeadFSBO Company

Find your Dream Home



All information is deemed reliable but is not guaranteed and should be independently verified.

When you re looking through the Sunday paper you might see ads that say [fsbo home](#), [fsbo house](#), or [fsbo land](#). What does fsbo mean? FSBO stands for For Sale By Owner. This is when a seller puts up his home or land for sale without the use of a real estate agent.

NEW!

contact@leadfsbo.com